

SPG27SK
STEPPING MOTORS

STANDARD SPECIFICATIONS

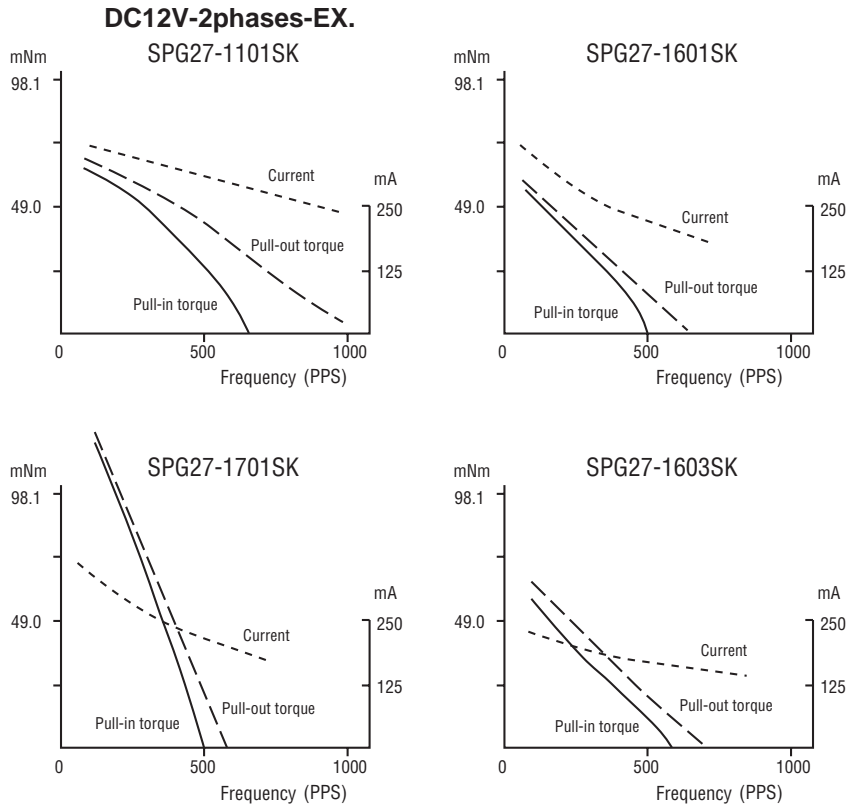
Item	SPG27			
	1101SK	1601SK	1701SK	1603SK
Number of phases	2 phase unipolar (can be used as 2 phase bipolar by plugging off common terminals)			
Gear ratio	1/5	1/5	1/12	1/5
Step angle (2 phases-EX)	3°	3°	1.25°	3°
Steps (2 phases-EX)	120	60	288	120
Winding resistance	30 Ω	60 Ω		320 Ω
Power	Average power consumption 2 W maximum			
Current	Refer to PERFORMANCE CURVES			
Pull-in torque				
Pull-out torque				
Pull-in pulse rate				
Maximum continuous response frequency				
Temperature rise	Refer to TEMPERATURE CHARACTERISTICS			
CURVES Insulation resistance	30 MΩ minimum at DC500 V			
Dielectric strength	500Vrms (AC50 Hz, 1 min)			
Operating temperature range	0 ~ 50 °C			
Net weight	Approx. 60 g			
Axial maximum load	Continuous	19.6 mN-m		
	Momentary	98 mN-m		
Connector terminal	<p>Male connector 06ZR-8M or ZHR-6 Made by J.S.T. Mtg Co., Ltd</p>			

※ The characteristics were measured using DM-412X.

Lot production is required. Please consult us for ordering.

SPG27SK STEPPING MOTORS

PERFORMANCE CURVES (Reference value)



TEMPERATURE CHARACTERISTICS

