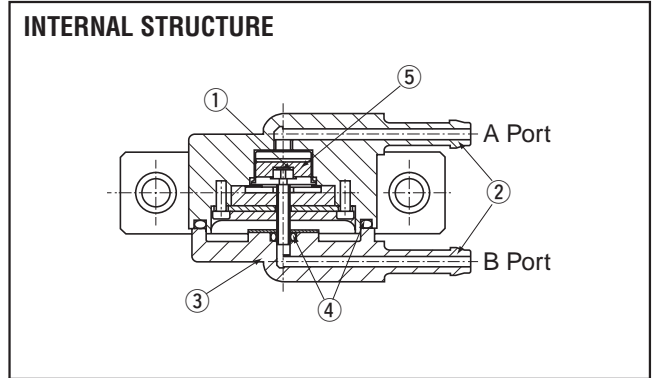


**PRESSURE TRANSDUCERS WITH AMP.**

# PA-110



## FEATURES

- Heavy-duty casing for outdoor use
- Supply voltage : 5 VDC or 12 VDC
- Built-in temperature compensation

Part name	Material
① Sensor chip	Silicone
② Pressure Port	PPS (Polyphenylene sulphide)
③ Housing	
④ "O" ring	Nitrile rubber
⑤ Resin compound	Silicone gel

## MODEL NUMBER DESIGNATION

**PA-110-102D-012**



## LIST OF MODEL NUMBERS

Pressure reference	Differential	
Rated pressure range kPa	0 ~ 100	
Supply voltage VDC	12	5
Model number	PA-110-102D-012	PA-110-102D-005

※Verify the above model numbers when placing orders.

**PA-110**  
**PRESSURE TRANSDUCERS WITH AMP.**

**STANDARD SPECIFICATIONS**

● Unless otherwise specified, the specs are defined at an ambient temperature of 25±5 °C and excitation voltage of 5 V DC or 12 VDC.

Item		Model number	PA-110	
			102D-012	102D-005
General specifications	Pressure reference		Differential	
	Rated pressure range	kPa	100	
	Maximum pressure	kPa	200	
	Break-down pressure	kPa	500	
	Operating temp. range	°C	- 20 ~ 70	
	Operating humidity	%RH	35 ~ 85 (No condensation)	
	Storage temp.	°C	- 20 ~ 80 (Atmospheric pressure, humidity 65 %RH maximum)	
	Pressure medium		Non-corrosive gases	
	Pressure port	mm	φ 4.5	
	Net weight	g	Approx. 70	
Power	Supply voltage	V DC	12 ± 0.25 V	5 ± 0.1 V
	Ripple content	maximum	10 % (P-P)	
	Consumption current	maximum	10 mA	
Analog output	Output voltage	V	0.5 ~ 4.5	
	Zero voltage	※1 V	0.5 ± 0.04	
	Span voltage	※1 V	4.0 ± 0.04	
	Output current	mA maximum	0.5 (Load resistance 10 kΩ minimum)	
	Linearity/Hysteresis	%F.S.	± 0.5	
	Thermal error -20 ~ 70 °C (Reference temp.: 25 °C)	%F.S.	± 3	
	Response	ms	2	

※1 The zero and span voltages of 5 V vary in proportion to the supply voltage.

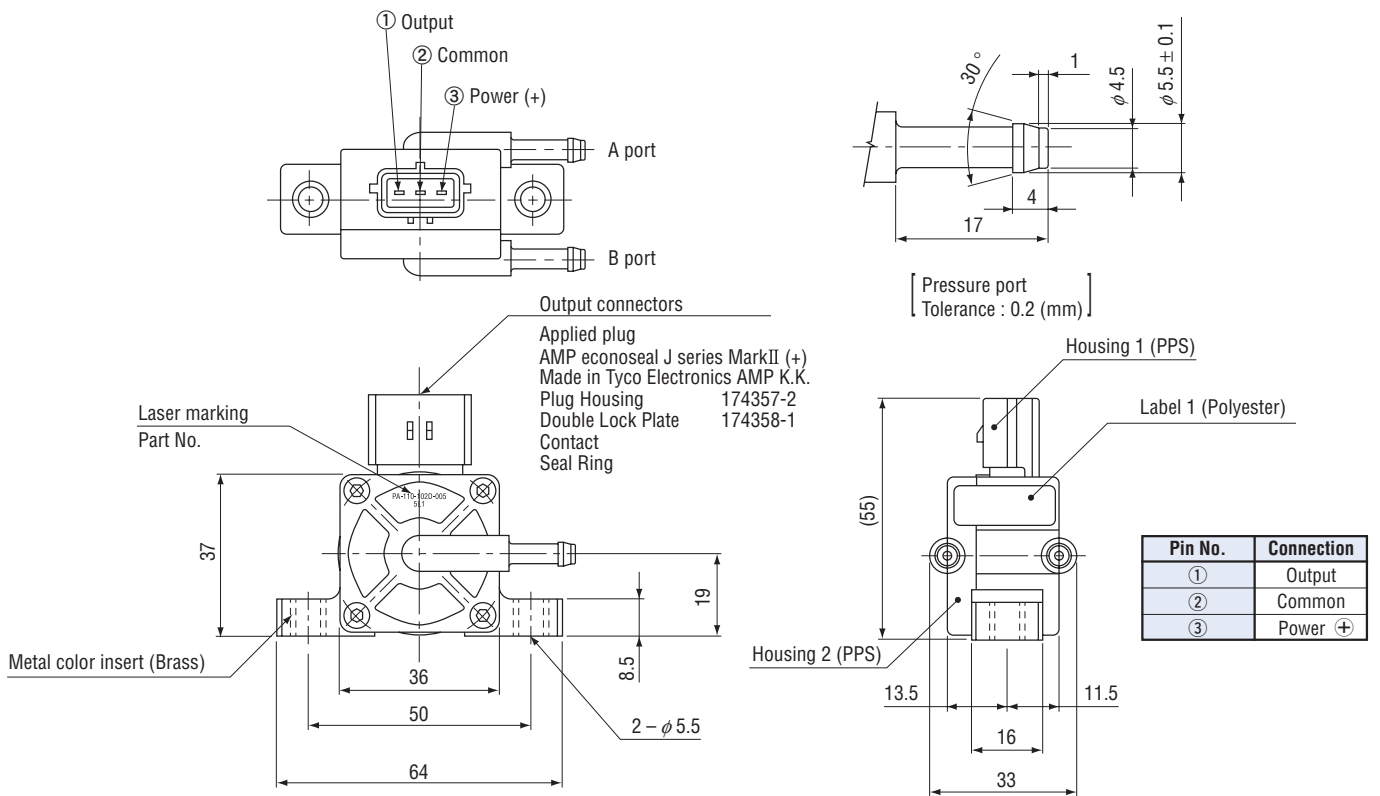
# PA-110 PRESSURE TRANSDUCERS WITH AMP.

## ENVIRONMENTAL CHARACTERISTICS

Test item	Test conditions (At 25 ± 5 °C)	Permissible change
Vibration	10 ~ 500 Hz, 1.5 mm maximum/294 m/s <sup>2</sup> , 3 directions for 2 hours each	Zero voltage/Span voltage: ± 1 %F.S. maximum
Shock	490 m/s <sup>2</sup> , 3 directions for 3 times each	
Pressure cycling	0 ~ Rated pressure, 10 <sup>6</sup> cycles	
Moisture resistance	40 °C, 90 ~ 95 %RH, 240 hrs.	

## OUTLINE DIMENSIONS

Unless otherwise specified, tolerance : ± 0.5 (Unit: mm)



## INTERNAL ELECTRICAL SCHEMATICS

